



ALL-IN-ONE SOLUTIONS
IN STEEL AND ALUMINIUM

QuickTube
NMF  **INDUSTRIES**



WE CREATE YOUR COMPETITIVE ADVANTAGES

Do you benefit from the latest technology in tube and sheet processing? We do!

The days of completing time-consuming workshop tasks in-house are over. Your metalworkers are simply too skilled and valuable to spend their time cutting, drilling, milling and customising items. We have the technology to perform these tasks with big time savings and unsurpassed precision and finish.

QuickTube NMF Industries is one of Europe's most visionary and experienced providers of 2D and 3D tube cutting, welding and sheet processing. We drive development and create value throughout the process, and we have strict requirements regarding quality, traceability, innovation and cost optimisation.

From prototype to finished product

We can handle your entire project, from the initial prototype to the finished product. Our key task is tailoring a production flow for each project, ensuring an integrated package combining optimum quality, reliable delivery and competitive prices.

QuickTube NMF Industries can inspire and advise you about the many possibilities of using steel and aluminium in modern construction to ensure you are at the cutting edge of technology.

A strong emphasis on quality

QuickTube NMF Industries is a family-owned company, with Majbritt Skovsager at the helm.

One of the advantages of being family-owned is that there's no big gap between decision-making and action, and we're free to invest in technology when we recognise the need. And we often do so. We strongly value quality and successful cooperation. We seek to be an innovative and trusted partner, with the will and the technology to handle advanced construction projects.





A PARTNER YOU CAN TRUST

QuickTube NMF Industries has all the relevant certifications for steel and aluminium work throughout the production chain, from the raw materials to the finished solution.

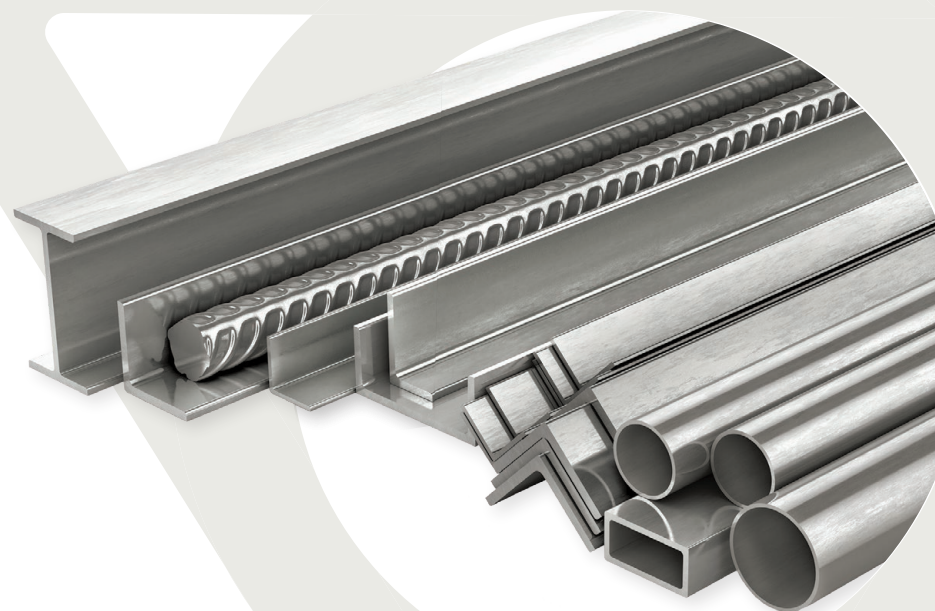
Full traceability and documentation

We deliver in accordance with EN1090, with the relevant traceability and documentation, and we are certified to ISO 9001:2015.

Close dialogue is a priority with us

At QuickTube NMF Industries we highly value establishing close cooperation with our customers. That's why your orders will be handled by a permanent contact who knows your customer history. We know this produces the best outcomes.

DA-ISO 9001:2015
EN-ISO 9001:2015
DS-EN 1090-
1:2009+A1:2012
EN 1090-1:2009+A1:2011





THE LARGEST LASER CUTTER IN NORTHERN EUROPE

WE HAVE TOMORROW'S TECHNOLOGY TODAY

Northern Europe's largest 3D laser cutter has been on Fyn, at QuickTube NMF Industries, since 2017. A massive and ambitious investment in the technology of the future that is revolutionising the possibilities of the industry. For example, our LT14 can cut the very large components for your project and transport them to the construction sites, where the customised components are easily assembled in line with your requirements. That saves you valuable time on various adaptations of tubes and profiles on the construction site and in the welding booth.

Ask us for advice – it pays off

The sooner you involve us in your project, the more your architects, clients and contractors will be able to benefit from our expertise and experience, working with us to identify the very best solution.



Ø356 mm × 16 mm × 15 m × 135 kg/m



3D LASER CUTTING

WE TURN MINUTES INTO SECONDS

A saving of up to 30% of the normal time spent on manual workshop tasks. This is often the result when using 3D tube laser cutting.

Over the years, we have accumulated unique know-how for optimising production using laser tube cutting, which – in one operation – eliminates the need for a number of cost-increasing operations such as drilling, sawing and milling. We do it all in a single work process and ensure an efficient production flow in post-processing – and big savings in your own production.

We've made it easy to deliver quality

When we supply the parts for large frames and structures, we always think about building user-friendliness and efficiency into the project. We engrave ID numbers on the individual parts, making assembly straightforward for the welders, for example. Dovetailed solutions ensure robust, efficient assembly of sheet and tube components, sometimes supported by engraved instructions. It doesn't get easier than that!



The figures speak for themselves...

A current case handled by QuickTube NMF Industries involved an order for eight 6-metre workpieces for HEA 240 girders. The traditional workflow would normally include at least 4 manual workshop tasks that would take 6 man-hours to complete per workpiece.

Our 3D laser cutter does it all in one go – and it only takes us 30 minutes to do the job!

We prepared all 8 workpieces ordered in approximately 3 hours, whereas conventional suppliers would spend about 4 days on the task.

WITH CONVENTIONAL MACHINING

6
HOURS

Measuring and marking up the workpiece
Shortening with a bandsaw
Preparing a template to mark holes
Drilling holes

WITH 3D LASER CUTTING

1.5
HOURS

Job done in



MACHINING TUBES AND SHEETS

LARGE AND SMALL WORKPIECES AND RUNS

Laser cutting and sheet bending

We offer laser cutting of sheet metal parts and bending of workpieces, from elegant stainless steel finishes to large, coarser workpieces in ordinary black steel.

We can laser cut down to 0.1 mm precision, which means a minimum of thermal impact, as well as fast and efficient sheet cutting for you.

As one of only a few in Denmark, our LVD Easy Form can bend items up to 6.1 m long and has a capacity of 320 tonnes.

Bending and rolling of tubes and profiles

QuickTube NMF offers rolling and bending of small and large radius workpieces and a great variety of profiles, offering custom solutions in large or small runs. We handle even demanding rolling tasks where quality and accuracy are crucial to the result.

Flowdrilling

Flowdrill technology makes it possible to create a threaded connection with bushing in materials with thin walls, such as black steel and stainless steel. This forms strong threaded connections that replace the need for welded nuts, threaded inserts, rivet nuts and other reinforcements. And, above all, the process saves you expensive production time.

Sheet laser

The EAGLE Crane Master metal sheet laser is one of the most efficient in the market, as it has automated loading and offloading, loading sheet metal components and offloading cut workpieces simultaneously. The Crane Master can cut up to 25 mm items and accepts up to 2 x 4 m.

Punching

Our LVD STRIPPIT punching machine offers the flexibility to handle both short and long production runs efficiently. The robust design ensures positioning accuracy, reliability and tremendous flexibility. The machine can handle a material thickness of up to 6.4 mm and has a hit rate of up to 440 HPM.

SEE ALL THE TECHNOLOGIES AND DIMENSIONS WE OFFER:





WELDING

EXPERTS IN ALUMINIUM WELDING

QuickTube NMF Industries welds black steel, stainless steel and aluminium, and our staff are all specialists with many years' experience.

Aluminium is softer than other metals and therefore behaves differently during welding. This may make welding aluminium more difficult for other suppliers, but not for us. Our extensive experience of TIG welding ensures a perfect result every time.

We are often consulted on difficult tasks, and we handle welding work for major projects without compromising on quality.

TIG welding

We carry out TIG welding on thin stainless steel and aluminium. In most cases we provide this type of welding for industries where the requirements for the visual quality of the result are extra strict.

MIG and MAG welding

With MIG and MAG welding, we have the capacity to weld materials and workpieces that are usually difficult to handle, and only minimal post-processing is needed.

MIG (inert gas) is most commonly used for welding aluminium, stainless steel and other metals where the gas is inert, i.e. not included in the welding process.

MAG (active gas) most often involves welding steel materials with CO₂ (carbon dioxide), where the gas contributes to the melting and the molten pool.

Welding robot

Our welding robot has been upgraded with a CMT welder, so now the robot welds thin aluminium more evenly.

The welding robot can handle a weight of 1,100 kg and can carry out TIG/MIG/MAG and CMT welding with joint tracking.





OUR OWN FACTORY IN CHINA

DANISH QUALITY WITH CHINESE BENEFITS

For many years, QuickTube NMF Industries has had its own production plant with Danish management at our Ningbo, China, factory. This guarantees you the best possible combination of quality, price and delivery terms, for small as well as large production runs. Our factories in Denmark and China are certified to ISO 9001:2008 and EN1090-1 EXC3, endorsing the effectiveness of our quality management and internal processes.

Whether the task is to be carried out in Denmark or in China is rarely a clear-cut choice. The amount of labour, the complexity, transport costs, delivery time, etc., must all be considered.

Whatever the decision, you always deal with QuickTube NMF Industries in Denmark, which ensures your project is produced in the optimum way.

The best of both worlds

In terms of price, we're not afraid to say we have the keenest prices worldwide. Combined with top Danish quality guaranteed by Danish management and Danish project managers, our factory in China is an attractive partner for many of our customers.

We place great emphasis on combining our expertise across continents to bring you all the benefits of the "one point of entry" philosophy. In other words, a single contact, supplier and business partner all rolled into one, offering you a world of opportunities.





YOUR ALL-IN-ONE SUPPLIER

– SAVING YOU TIME AND RESOURCES

QuickTube NMF Industries was created by the merger of two sister companies, QuickTube and NMF Industries (formerly Næsby Maskinfabrik). For more than 20 years, we have built up valuable experience in the processing of all kinds of metals for industry and construction.

We always endeavour to deliver consistently high quality within the desired delivery time. Quality, documentation and traceability come naturally to us as part and parcel of being a supplier to even the most demanding industries.

The whole process in one place

Our setup is based on an advanced and versatile pool of machinery that can handle all sheet metal and tube processing in-house.

For our customers, this means they can gather all the workshop tasks in one place, with one person responsible for the entire process. This can be seen on the bottom line of the projects in terms of time and money saved.





STAIRS, RAILINGS AND BALCONIES



Solid fire escapes, balconies and railings for residential and commercial building are one of our specialities. We provide smart solutions with excavations, tap solutions and bent tube parts, which means easy and efficient post-processing in the workshop or on the construction site.

Our engineering department visualises the projects in 3D drawing software, so the solution corresponds 100% to your wishes and requirements.





OVER TO OUR CUSTOMERS

Lomac A/S

Well impressed...

Lomac A/S reaped the benefit of 3D laser tube cutting when they landed an important order from a major German wind turbine manufacturer for a 72-metre long, 5-metre wide structure for casting blade-moulds.

"I already had 3D laser tube technology in mind when my engineer Jan said he'd read an article about QuickTube's investment in the largest laser cutter in northern Europe. Until then, you'd have had to go all the way to Italy to get such large workpieces laser cut, and that just wasn't an option for us. We'd never have dared place such an important project so far away. All of a sudden, it was now relevant to look at options for using this technology locally, even bearing in mind the massive workpieces we have to deal with," owner Lars Malling explains.

"We haven't actually done the calculation, but at a guess, we save about 50% of time spent cutting, adjusting and tacking. In our industry, you have to embrace the possibilities offered by new technology, or you'll soon be left behind. It's a no-brainer."

"We felt we were in safe hands right from the start. After all, QuickTube knows ten times more about the potential than we do, and they're keen to share their knowledge. What they do is highly specialised; we're well impressed."



Frederiks Smede & VVS A/S

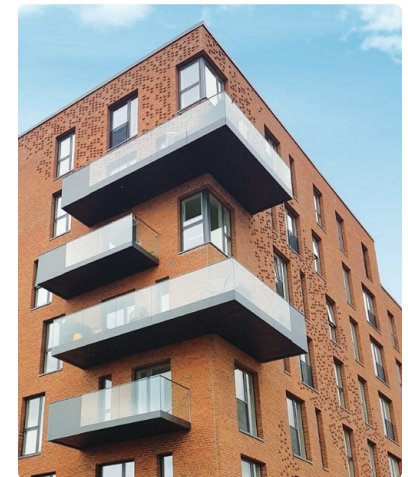
Saving 5–6 hours of processing time per balcony settled it

When Frederiks Smede & VVS A/S landed a large order for 100 balconies, 3D laser tube cutting was a vital part of the project.

"The kind of project we were embarking on requires hours and hours of manual labour – sawing, drilling, milling, sharpening, etc. I could clearly see some exciting possibilities for automating some of these tasks with 3D laser tube cutting," project manager John Madsen explains.

"It was obvious from the start that there were big savings to be made. In fact, we were able to save 5–6 production hours per balcony – man-hours freed up for our other production tasks. That settled it, and we signed a contract with QuickTube."

"The actual assembly time is a decisive factor to give us the edge and, at the same time, enable us to deliver quality in a competitive market. We are subject to tough CE-labelling requirements, and of course we've taken measurements throughout the process, and I have to say, the quality, precision and finish are tip-top," John Madsen affirms.



WANT TO GET STARTED?

E-mail us at

tilbud@qt-nmf.dk or ordre@quicktube.dk

WOULD YOU LIKE TO RECEIVE UPDATES?

Follow us:



www.quicktube.dk